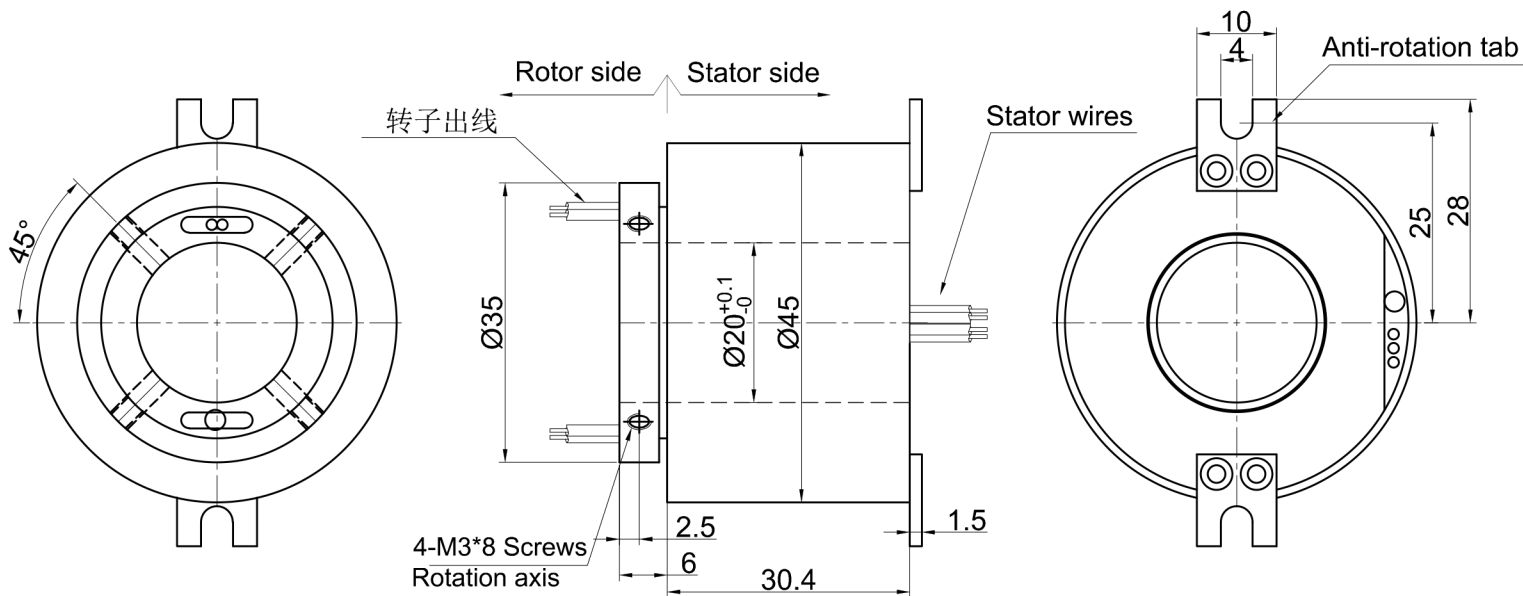
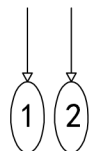


THIS DOCUMENT IS THE PROPERTY OF RION TECHNOLOGY(SHENZHEN) LTD.(HEREAFTER"RION"),IT IS LENT AND IS TO BE RETURNED UPON REQUEST,THE CONTENTS OF THIS DOCUMENT ARE CONFIDENTIAL AND CONSTITUTE TRADE SECRETS PROPRIETARY TO RION,THIS DOCUMENT NOR ITS CONTENTS DOCUMENT NOR ITS CONTENTS SHALL BE DISCLOSED TO ANY UNAUTHORIAED PERSON COPIED OR PUBLISHED WITHOUT RION PRIOR WRITTEN CONSENT.
COPY RIGHT@2020 RION TECHNOLOGY

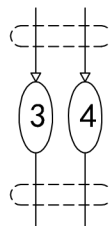


2 Rings 5A
2-AWG22# teflon



BLK RED

2 Rings Signal
Type K thermocouple wire



Electrical Specification

| | | | |
|-------------------------|-----------------|-----------|--|
| 1 Rings | 4 | 2 Current | Power module: 2rings, 5A/ring Signal module: 2rings |
| 2 Voltage | 0-240VDC/VAC | | |
| 3 Insulation Resistance | 500MΩ@300VDC | | |
| 4 Electrical noise | Max.10mΩ; | | |
| 5 Dielectric strength | 200VAC@50Hz;60S | | |

Mecchanical Specification

| | | | |
|---------|--|----------|--------------|
| 6 Speed | 0~2000RPM; | 7 Torque | Max.0.2 N.M; |
| 8 Life | Typical 30million revolutions, but strongly depends on your working conditions | | |

Environmental adaptability

| | | | |
|-----------------------|---|------------------------|-----------|
| 9 Working temperature | -40℃~+80℃ | 10 Storage temperature | -45℃~+85℃ |
| 11 humidity | 85±3%(30℃+5℃) | | |
| 12 Rush | 40g,11ms,Half sine wave, Vertical direction 3 times,Level 3times | | |
| 13 IP Class | IP51 | | |

Materral/Attachment

| | | | |
|---------------------|---|---------------------|------------------------------|
| 14 Contact Material | noble metal | 15 Housing material | AL Alloy+engineering plastic |
| 16 Lead wire | Rotor:300mm(See wiring diagram) Stator:300mm(See wiring diagram) | | |

| | | | | | |
|--|----------|------------------------------------|--|---------------------------|--|
| UNLESS OTHERWISE SPECIFIED | | TOLERANCES EXCEPT AS NOTED | | 2 rings 5A+2 rings Signal | |
| 1.ALL DIMENSIONS ARE IN MM HES BREAK SHARP EDGES SDEBURR | | DECIMAL X±.1 XX±.03 XXX±.005 | | MODEL RX00709001 | |
| 2.MATERIAL&FINISH TO BE AS NOTED OR SUBSTITUTED WITH AN APPROVED AND TESTED EQUIVALENT | | FRACTIONAL±1/16 ANGULAR±1° | | SIZE A | |
| FILLET'S R.015 | FINISH ✓ | RION | | REV. A/0 | |
| THIRD ANGLE PROJECTION | | SCALE 1:1 | | UNIT mm | |