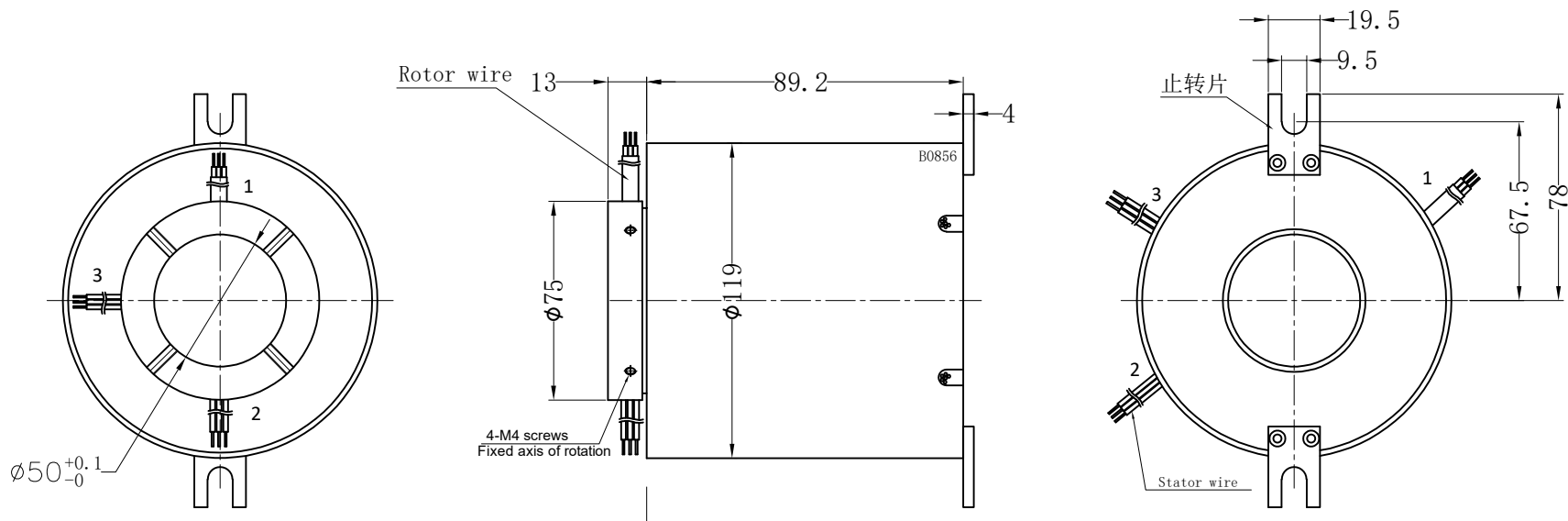


THIS DOCUMENT IS THE PROPERTY OF RION TECHNOLOGY(SHENZHEN) LTD.(HEREAFTER"RION"),IT IS LENT AND IS TO BE RETURNED UPON REQUEST,THE CONTENTS OF THIS DOCUMENT ARE CONFIDENTIAL AND CONSTITUTE TRADE SECRETS PROPRIETARY TO RION,THIS DOCUMENT NOR ITS CONTENTS DOCUMENT NOR ITS CONTENTS SHALL BE DISCLOSED TO ANY UNAUTHORIAED PERSON COPIED OR PUBLISHED WITHOUT RION PRIOR WRITTEN CONSENT.  
COPY RIGHT@2020 RION TECHNOLOGY



### Electrical Specification

1	Rings	15	2	Current	Power module:10 ring, 10A/ring Signal module: 1 Industrial Ethernet
2	Voltage	0-300VAC/VDC			
3	Insulation Resistance	500M $\Omega$ @600VDC			
4	Electrical noise	Max.10m $\Omega$ ;			
5	Dielectric strength	600VAC@50Hz;60S			

### Mechanical Specification

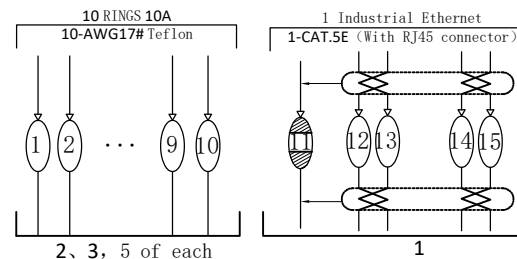
6	Speed	0~250RPM;	7	Torque	Max.0.5 N.M;
---	-------	-----------	---	--------	--------------

### Environmental adaptability

9	Working temperature	-30 $^{\circ}$ C~+80 $^{\circ}$ C	10	Storage temperature	-30 $^{\circ}$ C~+80 $^{\circ}$ C
11	humidity	85 $\pm$ 3%(30 $^{\circ}$ C+5 $^{\circ}$ C)			
12	Rush	40g,11ms,Half sine wave, Vertical direction 3 times,Level 3times			
13	IP Class	IP51			

### Material/Attachment

14	Contact Material	noble matal	15	Housing material	ALL Alloy
16	Lead wire	Rotor:(See wiring diagram) Stator:(See wiring diagram)			



UNLESS OTHERWISE SPECIFIED		10 ring 10A+1 Industrial Ethernet	
1.ALL DIMENSIONS ARE IN MM HES BREAK SHARP EDGES & DEBURR		TOLERANCES (EXCEPT AS NOTED)	MODEL <b>MB500-P1010-1E-VD(B0856)</b>
2.MATERIAL&FINISH TO BE AS NOTED OR SUBSTITUTED WITH AN APPROVED AND TESTED EQUIVALENT		DECIMAL X $\pm$ 1 XX $\pm$ .03 XXX $\pm$ .005	<b>RION</b> SIZE A
FILLETS R.015	FINISH $\checkmark$	FRACTIONAL $\pm$ 1/16	R E V. A / 0
THIRD ANGLE PROJECTION		ANGULAR $\pm$ 1 $^{\circ}$	SCALE 1:1
DWG.NO	FSD	DATE 2022-11-09	UNIT mm