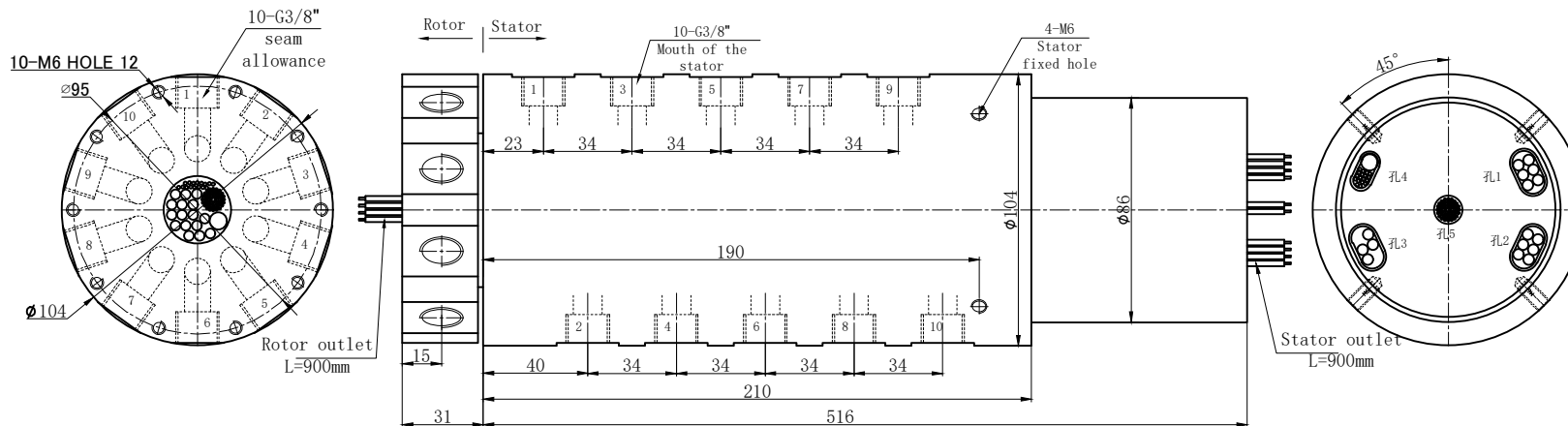


THIS DOCUMENT IS THE PROPERTY OF RION TECHNOLOGY(SHENZHEN) LTD.(HEREAFTER"RION"),IT IS LENT AND IS TO BE RETURNED UPON REQUEST,THE CONTENTS OF THIS DOCUMENT ARE CONFIDENTIAL AND CONSTITUTE TRADE SECRETS PROPRIETARY TO RION,THIS DOCUMENT NOR ITS CONTENTS DOCUMENT NOR ITS CONTENTS SHALL BE DISCLOSED TO ANY UNAUTHORIAED PERSON COPIED OR PUBLISHED WITHOUT RION PRIOR WRITTEN CONSENT.
COPY RIGHT@2023 RION TECHNOLOGY



Electrical Specification

1	Rings	99	2	Current	Power module:16 rings ,40A/ring
2	Voltage	0-380VAC/VDC			Signal module:
3	Insulation Resistance	500MΩ@600VDC			74 rings signal
4	Electrical noise	Max.10mΩ;			1 set of 1000 m
5	Dielectric strength	1000VAC@50Hz;60S			

Mechanical Specification

6	Speed	0~100RPM;	7	Torque	
---	-------	-----------	---	--------	--

Environmental adaptability

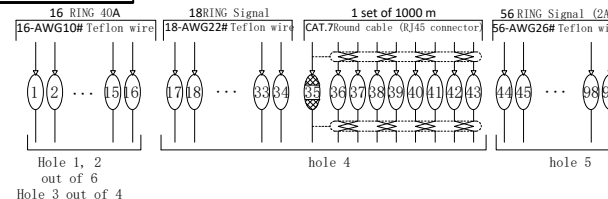
9	Working temperature	-30℃~+80℃	10	Storage temperature	-30℃~+100℃
11	humidity	85±3%(30℃+5℃)			
12	Rush	40g,11ms,Half sine wave, Vertical direction 3 times,Level 3times			
13	IP Class	IP51			

Material/Attachment

14	Contact Material	noble matal	15	Housing material	ALL Alloy
16	Lead wire	Rotor: (See wiring diagram) Stator: (See wiring diagram)			

Rotary joint technical parameters

10	Channel	Tracheal joint G3/8"
Pressure	Air pressure 1 Mpa	
Torsion	T≤10N.M	
Medium type	compressed air	
Material	Aluminum alloy	



UNLESS OTHERWISE SPECIFIED		16 ring 40A+74 ring Signal+1 set of 1000m	
1.ALL DIMENSIONS ARE IN MM HES BREAK SHARP EDGES &DEBURR		TOLERANCES (EXCEPT AS NOTED)	MODEL
2.MATERIAL&FINISH TO BE AS NOTED OR SUBSTITUTED WITH AN APPROVED AND TESTED EQUIVALENT		DECIMAL X±.1 XX±.03 XXX±.005	REPH1000-04-P1640-S74-1E
FILLETS R.015	FINISH ✓	FRACTIONAL±1/16	
THIRD ANGLE PROJECTION		ANGULAR±1°	
			R E V. A / 0
			SCALE 1:1
DWG.NO	FSD	DATE	UNIT mm
		2022-11-09	