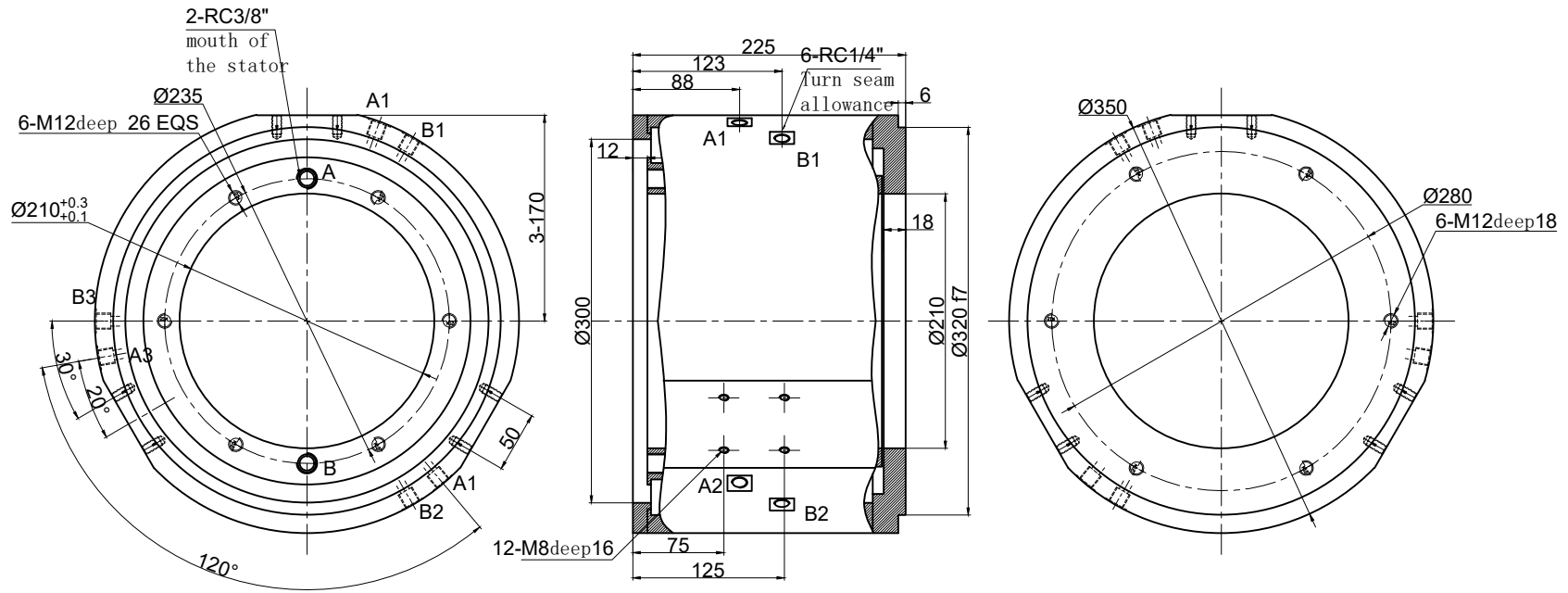


MARK	ECN NO.	Modify	Approve	DATE

THIS DOCUMENT IS THE PROPERTY OF RION TECHNOLOGY(SHENZHEN) LTD.(HEREAFTER"RION"),IT IS LENT AND IS TO BE RETURNED UPON REQUEST,THE CONTENTS OF THIS DOCUMENT ARE CONFIDENTIAL AND CONSTITUTE TRADE SECRETS PROPRIETARY TO RION,THIS DOCUMENT NOR ITS CONTENTS DOCUMENT NOR ITS CONTENTS SHALL BE DISCLOSED TO ANY UNAUTHORIAED PERSON COPIED OR PUBLISHED WITHOUT RION PRIOR WRITTEN CONSENT.
COPY RIGHT@2023 RION TECHNOLOGY



Rotary joint technical parameters

Channel	Rotor: 2 channel water RC3/8 ", Stator: 6 channel water RC1/4",
Pressure	< 1 Mpa
Torsion	<220 N. M
Medium type	water
Maximum speed	0-250 RPM
Temperature	-30° C ~+ 80° C

UNLESS OTHERWISE SPECIFIED		TOLERANCES (EXCEPT AS NOTED)		Slip ring shape figure	
1.ALL DIMENSIONS ARE IN MM HES BREAK SHARP EDGES &DEBURR		DECIMAL X±.1		MODEL REPH206	
2.MATERIAL&FINISH TO BE AS NOTED OR SUBSTITUTED WITH AN APPROVED AND TESTED EQUIVALENT		XX±.03		SIZE A	
FILLET R.015	FINISH $\sqrt{\quad}$	XXX±.005		RION	
THIRD ANGLE PROJECTION		FRACTIONAL±1/16		RE V. A / 0	
		ANGULAR±1°		SCALE 1:1	
DWG.NO	FSD	DATE	2022-11-09	UNIT	mm