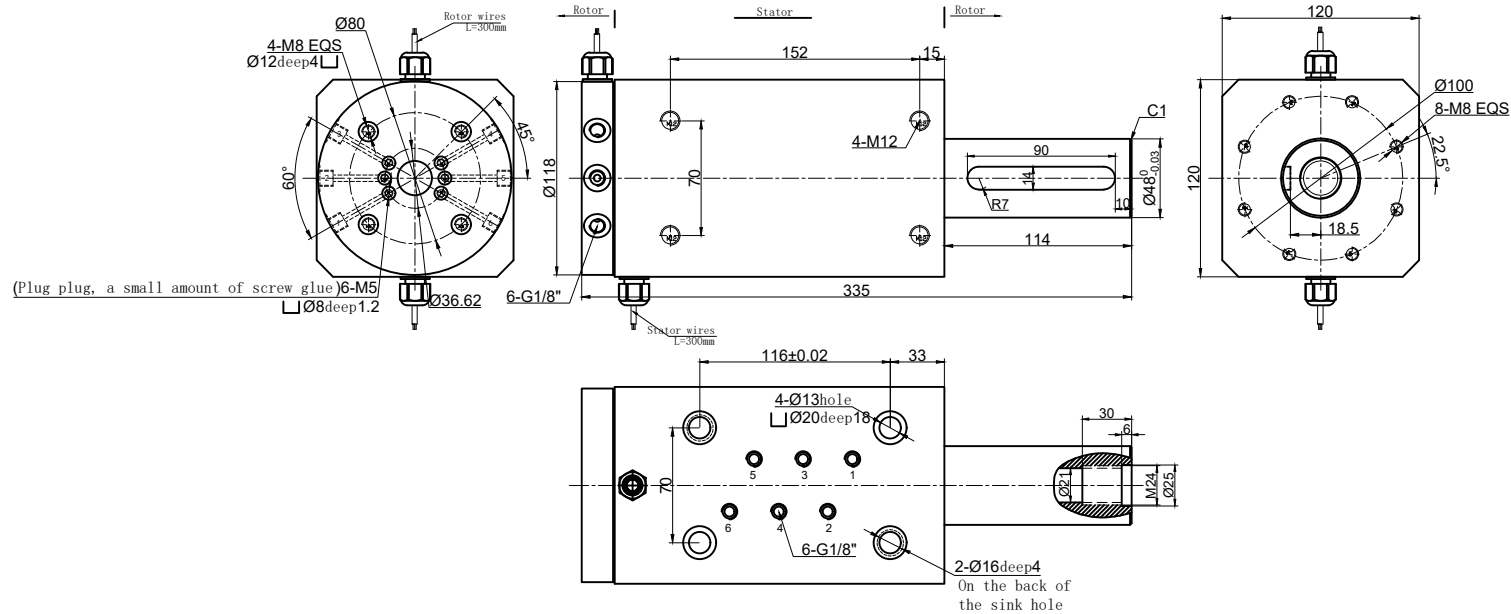


THIS DOCUMENT IS THE PROPERTY OF RION TECHNOLOGY(SHENZHEN) LTD.(HEREAFTER"RION"),IT IS LENT AND IS TO BE RETURNED UPON REQUEST,THE CONTENTS OF THIS DOCUMENT ARE CONFIDENTIAL AND CONSTITUTE TRADE SECRETS PROPRIETARY TO RION,THIS DOCUMENT NOR ITS CONTENTS DOCUMENT NOR ITS CONTENTS SHALL BE DISCLOSED TO ANY UNAUTHORIAED PERSON COPIED OR PUBLISHED WITHOUT RION PRIOR WRITTEN CONSENT.  
COPY RIGHT@2020 RION TECHNOLOGY



### Electrical Specification

1	Rings	12	2	Current	Signal module: 12 rings signal
2	Voltage	0-380VAC/VDC			
3	Insulation Resistance	500MΩ@500VDC			
4	Electrical noise	Max.30mΩ;			
5	Dielectric strength	500VAC@50Hz;60S			

### Mechanical Specification

6	Speed	0~150RPM;	7	Torque	Max.6 N.M;
---	-------	-----------	---	--------	------------

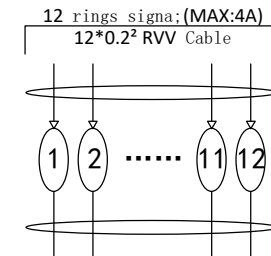
### Environmental adaptability

9	Working temperature	-30℃~+80℃	10	Storage temperature	-30 ~+80
11	humidity	85±3%(30℃+5℃)			
12	Rush	40g,11ms,Half sine wave, Vertical direction 3 times,Level 3times			
13	IP Class	IP51			

### Material/Attachment

14	Contact Material	noble matal	15	Housing material	ALL Alloy
16	Lead wire	Rotor: (See wiring diagram) Stator: (See wiring diagram)			

Rotary joint technical parameters	
4 Channel	Tracheal joint G1/8 ", size 6 mm
Pressure	Air pressure 1 Mpa
Torsion	T ≤ 6 N.M
Medium type	compressed air
Maximum speed	0-100 RPM
Temperature	-30° C ~ + 80° C
Material	ALL Alloy



UNLESS OTHERWISE SPECIFIED		TOLERANCES (EXCEPT AS NOTED)		6 channel gas+12 rings signal	
1.ALL DIMENSIONS ARE IN MM HES BREAK SHARP EDGES & DEBURR		DECIMAL X±.1		MODEL	
2.MATERIAL&FINISH TO BE AS NOTED OR SUBSTITUTED WITH AN APPROVED AND TESTED EQUIVALENT		XX±.03		REPH600-02-S12	
FILLETS R.015		XXX±.005		SIZE	
FINISH ✓		FRACTIONAL±1/16		A	
THIRD ANGLE PROJECTION		ANGULAR±1°		R E V.	
ANGULAR±1°		SCALE		A / 0	
DWG.NO		FSD		SCALE	
DATE		UNIT		1:1	
2022-11-09		mm			