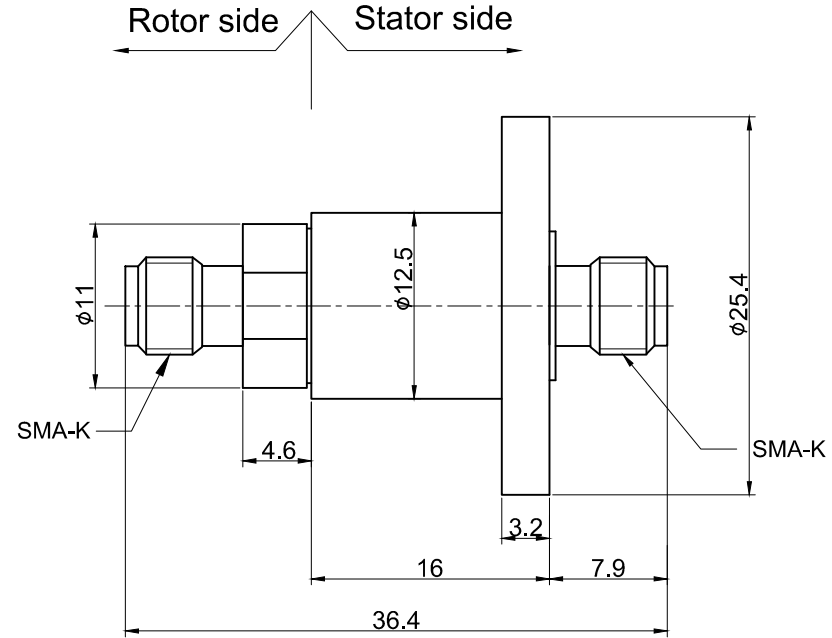
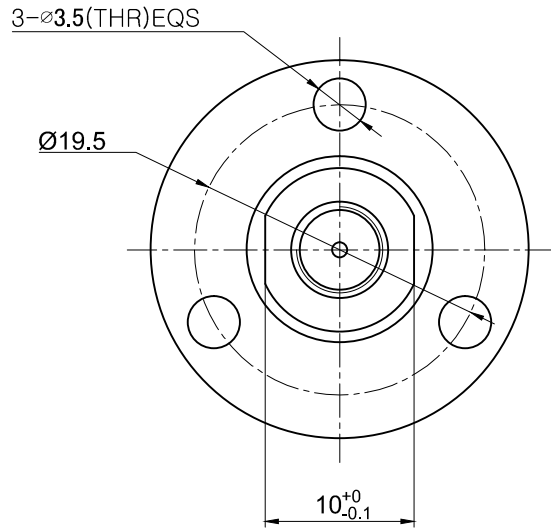


THIS DOCUMENT IS THE PROPERTY OF RION TECHNOLOGY(SHENZHEN) LTD.(HEREAFTER"RION"),IT IS LENT AND IS TO BE RETURNED UPON REQUEST,THE CONTENTS OF THIS DOCUMENT ARE CONFIDENTIAL AND CONSTITUTE TRADE SECRETS PROPRIETARY TO RION,THIS DOCUMENT NOR ITS CONTENTS DOCUMENT NOR ITS CONTENTS SHALL BE DISCLOSED TO ANY UNAUTHORIAED PERSON COPIED OR PUBLISHED WITHOUT RION PRIOR WRITTEN CONSENT.
COPY RIGHT@2020 RION TECHNOLOGY



UNLESS OTHERWISE SPECIFIED		TOLERANCES		1 channel RF	
1.ALL DIMENSIONS ARE IN MM HES BREAK SHARP EDGES & DEBURR		EXCEPT AS NOTED		MODEL RHF100-SMA-30G	
2.MATERIAL & FINISH TO BE AS NOTED OR SUBSTITUTED WITH AN APPROVED AND TESTED EQUIVALENT		DECIMAL X±.1	XX±.03	SIZE	A
FILLETS R.015	FINISH ✓	XXX±.005		R.E.V.	A / 0
THIRD ANGLE PROJECTION		FRACTIONAL±1/16	ANGULAR±1°	SCALE	1:1
				UNIT	mm



RF Rotary Joint-Technical Parameters

1 frequency	DC-30GHz	2 VSWR(dB)(MAX)	1.3
3 INSERTION LOSS(dB)(MAX)	0.3	4 VSWR-WOW(dB)(MAX)	0.05
5 INSERTION LOSS WOW(dB)(MAX)	0.03	6 Start up torque	0.1N.m
7 Maximum Speed(RPM)	250RPM	8 CONNECTION	SMA
9 working temperature(°C)	-40~85	10 IP	IP 51
11 Housing materia	Stainless steel		