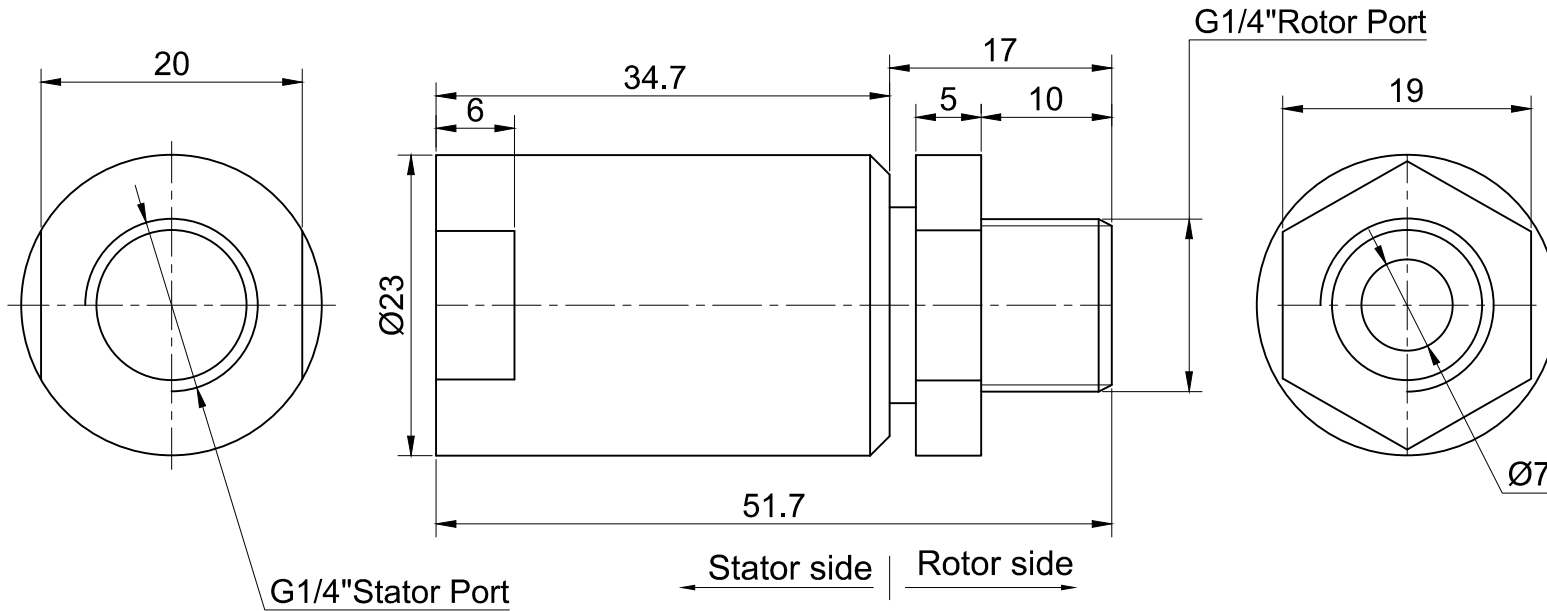


THIS DOCUMENT IS THE PROPERTY OF RION TECHNOLOGY(SHENZHEN) LTD.(HEREAFTER"RION"),IT IS LENT AND IS TO BE RETURNED UPON REQUEST,THE CONTENTS OF THIS DOCUMENT ARE CONFIDENTIAL AND CONSTITUTE TRADE SECRETS PROPRIETARY TO RION,THIS DOCUMENT NOR ITS CONTENTS DOCUMENT NOR ITS CONTENTS SHALL BE DISCLOSED TO ANY UNAUTHORIAED PERSON COPIED OR PUBLISHED WITHOUT RION PRIOR WRITTEN CONSENT.
COPY RIGHT@2020 RION TECHNOLOGY



UNLESS OTHERWISE SPECIFIED		TOLERANCES (EXCEPT AS NOTED)		1 passage Gas	
1.ALL DIMENSIONS ARE IN MM HES BREAK SHARP EDGES &DEBURR		DECIMAL X±.1		MODEL RK12A	
2.MATERIAL &FINISH TO BE AS NOTED OR SUBSTITUTED WITH AN APPROVED AND TESTED EQUIVALENT		XX±.03		SIZE A	
FILLETS R.015	FINISH ✓	XXX±.005		R.E.V. A / 0	
THIRD ANGLE PROJECTION		FRACTIONAL±1/16		SCALE 1:1	
⊙ ◀		ANGULAR±1°		UNIT mm	



Technical parameters of rotary joint					
1	Pressure	Max 1 Mpa	2	Passage	1 passage Gas
3	Torque	Max.0.2 N.M;	4	Tracheal connector	G1/4"
5	Media type	Compressed air	6	Working temperature	-30℃~+80℃
7	Speed	0-100RPM	8	Storage temperature	-35℃~+85℃
9	Housing material	copper			