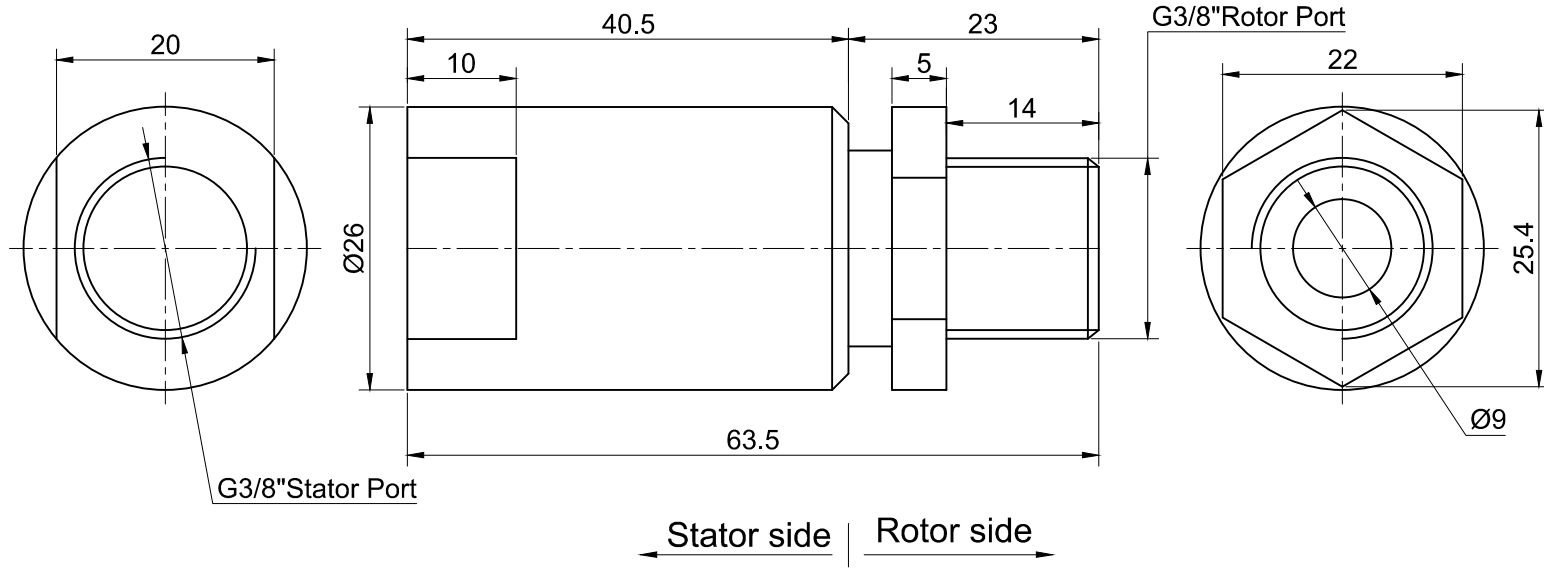


THIS DOCUMENT IS THE PROPERTY OF RION TECHNOLOGY(SHENZHEN) LTD.(HEREAFTER"RION"),IT IS LENT AND IS TO BE RETURNED UPON REQUEST,THE CONTENTS OF THIS DOCUMENT ARE CONFIDENTIAL AND CONSTITUTE TRADE SECRETS PROPRIETARY TO RION,THIS DOCUMENT NOR ITS CONTENTS DOCUMENT NOR ITS CONTENTS SHALL BE DISCLOSED TO ANY UNAUTHORIAED PERSON COPIED OR PUBLISHED WITHOUT RION PRIOR WRITTEN CONSENT.
COPY RIGHT@2020 RION TECHNOLOGY



| | | | | | |
|--|----------|----------------------------|--|---------------|--|
| UNLESS OTHERWISE SPECIFIED | | TOLERANCES EXCEPT AS NOTED | | 1 passage Gas | |
| 1.ALL DIMENSIONS ARE IN MM HES BREAK SHARP EDGES & DEBURR | | DECIMAL X±.1 | | MODEL RK13A | |
| 2.MATERIAL & FINISH TO BE AS NOTED OR SUBSTITUTED WITH AN APPROVED AND TESTED EQUIVALENT | | XX±.03 | | SIZE A | |
| FILLETS R.015 | FINISH ✓ | XXX±.005 | | R.E.V. A / 0 | |
| THIRD ANGLE PROJECTION | | FRACTIONAL±1/16 | | SCALE 1:1 | |
| ANGULAR±1° | | UNIT mm | | UNIT mm | |



| | | | | | |
|---|------------------|----------------|---|---------------------|---------------|
| 1 | Pressure | Max 1 Mpa | 2 | Passage | 1 passage Gas |
| 3 | Torque | Max.0.2 N.M; | 4 | Tracheal connector | G3/8" |
| 5 | Media type | Compressed air | 6 | Working temperature | -30℃~+80℃ |
| 7 | Speed | 0-100RPM | 8 | Storage temperature | -35℃~+85℃ |
| 9 | Housing material | copper | | | |