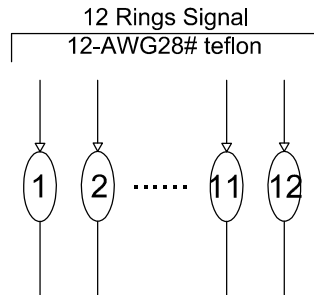
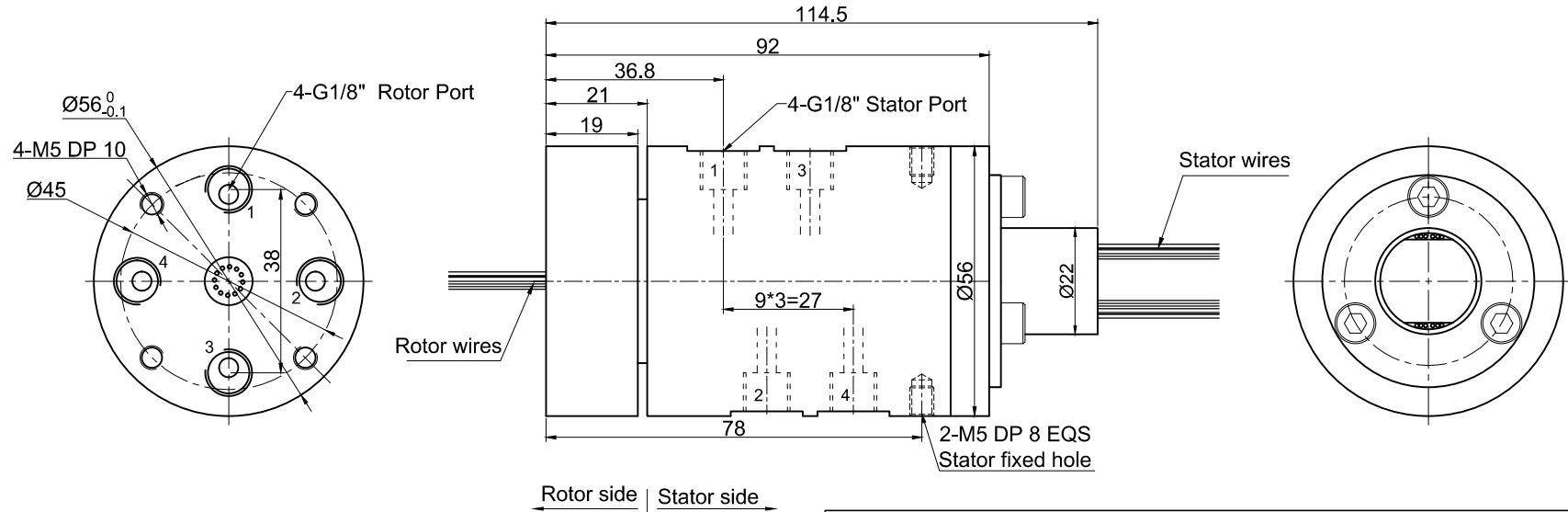


THIS DOCUMENT IS THE PROPERTY OF RION TECHNOLOGY(SHENZHEN) LTD.(HEREAFTER"RION"),IT IS LENT AND IS TO BE RETURNED UPON REQUEST,THE CONTENTS OF THIS DOCUMENT ARE CONFIDENTIAL AND CONSTITUTE TRADE SECRETS PROPRIETARY TO RION,THIS DOCUMENT NOR ITS CONTENTS DOCUMENT NOR ITS CONTENTS SHALL BE DISCLOSED TO ANY UNAUTHORISED PERSON COPIED OR PUBLISHED WITHOUT RION PRIOR WRITTEN CONSENT.
COPY RIGHT@2020 RION TECHNOLOGY



Technical parameters of rotary joint

1	Pressure	Max 1 Mpa	2	Passage	4 passage Air
3	Texture of materia	Aluminium alloy	4	Tracheal connector	G1/8"
5	Media type	Compressed air			

Electrical Specification

1	Rings	12	2	Current	Signal module:12 rings signal
3	Voltage	0-120VDC/VAC			
4	Insulation Resistance	100MΩ@150VDC			
5	Electrical noise	Max.10mΩ;			
6	Dielectric strength	500VAC@50Hz;60S			

Mechanication Specification

7	Speed	0~250RPM;	8	Torque	Max.0.9 N.M;
9	Typical Life	10million revolutions, but strongly depends on your working conditions			

Environmental adaptability

10	Working temperature	-30℃~+80℃	11	Storage temperature	-35℃~+85℃
12	humidity	85±3%(30℃+5℃)			
13	Rush	40g,11ms,Half sine wave, Vertical direction 3 times,Level 3times			
14	IP Class	IP51			

Material/Attachment

15	Contact Material	Precious metal	16	Housing material	ALL Alloy
17	Lead wire	Rotor:300mm(See wiring diagram) Stator:300mm(See wiring diagram)			

UNLESS OTHERWISE SPECIFIED		TOLERANCES (EXCEPT AS NOTED)		4 passage Air + 12 rings signal	
1.ALL DIMENSIONS ARE IN MM HES BREAK SHARP EDGES & DEBURR		DECIMAL X±.1		MODEL RKD41S-S12	
2.MATERIAL & FINISH TO BE AS NOTED OR SUBSTITUTED WITH AN APPROVED AND TESTED EQUIVALENT		XX±.03		SIZE A	
FILLETS R.015 FINISH		XXX±.005		R E V. A / 0	
THIRD ANGLE PROJECTION		FRACTIONAL±1/16		SCALE 1:1	
		ANGULAR±1°		UNIT mm	

