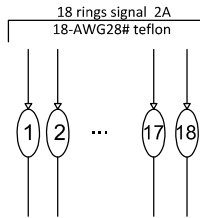
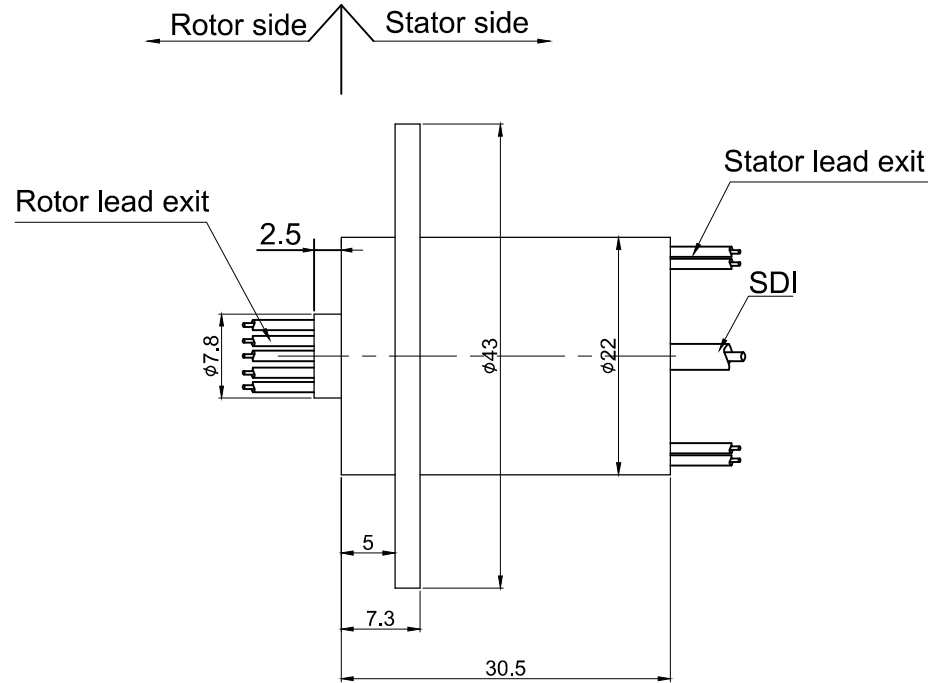
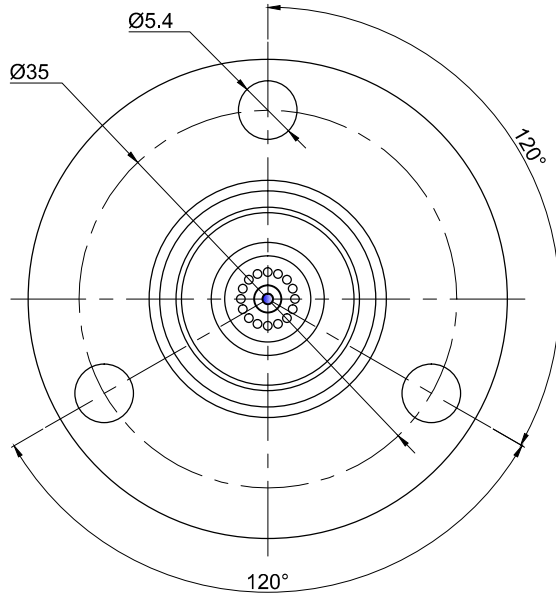



THIS DOCUMENT IS THE PROPERTY OF RION TECHNOLOGY(SHENZHEN) LTD.(HEREAFTER"RION"),IT IS LENT AND IS TO BE RETURNED UPON REQUEST,THE CONTENTS OF THIS DOCUMENT ARE CONFIDENTIAL AND CONSTITUTE TRADE SECRETS PROPRIETARY TO RION,THIS DOCUMENT NOR ITS CONTENTS DOCUMENT NOR ITS CONTENTS SHALL BE DISCLOSED TO ANY UNAUTHORISED PERSON COPIED OR PUBLISHED WITHOUT RION PRIOR WRITTEN CONSENT.  
COPY RIGHT@2020 RION TECHNOLOGY



### High Definition Rotary Joint-Technical Parameters

1 Frequency	DC-15GHz	2 Insertion loss	0.3 dB /1GHz Max
3 Return Loss	-18 dB / 1GHz Max	4 Incorporation loss fluctuation	+/-0.03dB
5 Input and Output	RG -179	6 Voltage standing wave ratio	VSWR≤1.3
7 Maximum Speed	60RPM	8 Impedance	75 ohms
9 Voltage standing wave ratio fluctuation	+/-0.05		
10 Rated current	Direct current MAX.1A		
11 Lead wire	Rotor:300mm Stator:300mm		

UNLESS OTHERWISE SPECIFIED		TOLERANCES (EXCEPT AS NOTED)		18 rings signal	
1. ALL DIMENSIONS ARE IN MM HES BREAK SHARP EDGES & DEBURR		DECIMAL X±.1		MODEL RSDI216	
2. MATERIAL & FINISH TO BE AS NOTED OR SUBSTITUTED WITH AN APPROVED AND TESTED EQUIVALENT		XX±.03		SIZE A	
FILLETS R.015		FINISH ✓		R E V. A / 0	
THIRD ANGLE PROJECTION		FRACTIONAL 1/16		SCALE 1:1	
ANGULAR ±1°		UNIT mm		UNIT mm	



### Electrical Specification

1 Rings	18	2 Current	Signal module:18 rings
3 Voltage	0-120VDC/VAC		
4 Insulation Resistance	500MΩ@220VDC		
5 Electrical noise	Max.10mΩ;		
6 Dielectric strength	100VAC@50Hz;60S		

### Mechanical Specification

7 Speed	0~60RPM;	8 Torque	Max.0.2 N.M;
9 Life	Typical:10million revolutions, but strongly depends on your working conditions		

### Environmental adaptability

10 Working temperature	-40℃~+80℃	11 Storage temperature	-45℃~+85℃
12 humidity	85±3%(30℃+5℃)		
13 Rush	40g,11ms,Half sine wave, Vertical direction 3 times,Level 3times		
14 IP Class	IP51		

### Material/Attachment

15 Contact Material	Precious metal	16 Housing material	engineering plastic
17 Lead wire	Rotor:300mm(See wiring diagram) Stator:300mm(See wiring diagram)		