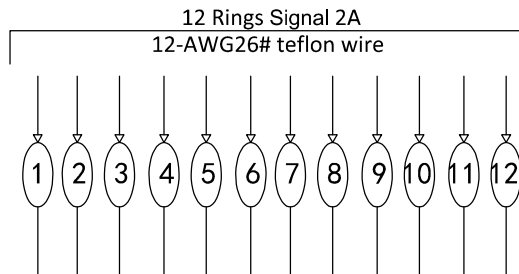
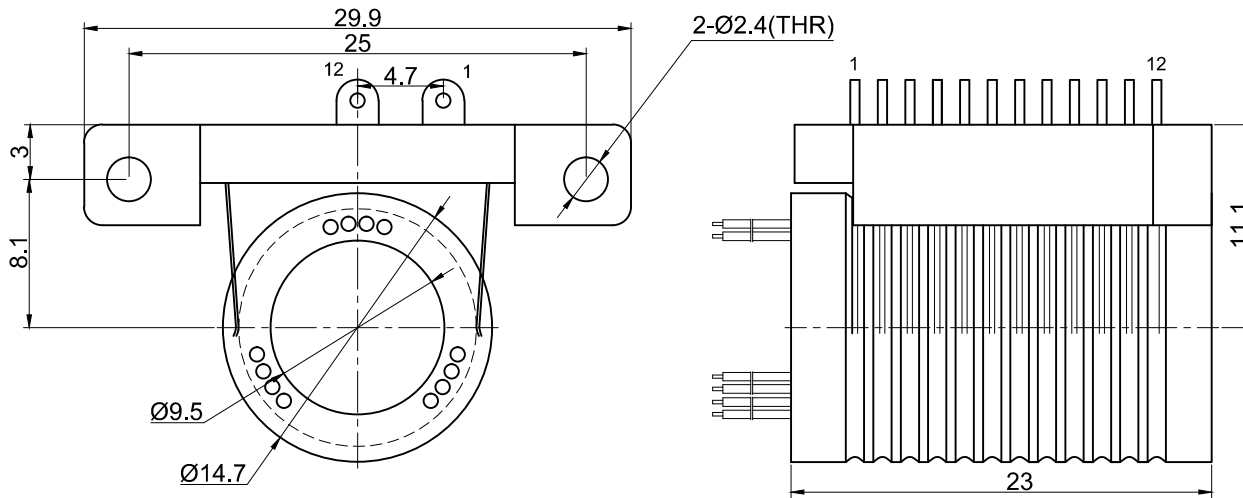


THIS DOCUMENT IS THE PROPERTY OF RION TECHNOLOGY(SHENZHEN) LTD.(HEREAFTER"RION"),IT IS LENT AND IS TO BE RETURNED UPON REQUEST,THE CONTENTS OF THIS DOCUMENT ARE CONFIDENTIAL AND CONSTITUTE TRADE SECRETS PROPRIETARY TO RION,THIS DOCUMENT NOR ITS CONTENTS DOCUMENT NOR ITS CONTENTS SHALL BE DISCLOSED TO ANY UNAUTHORIAED PERSON COPIED OR PUBLISHED WITHOUT RION PRIOR WRITTEN CONSENT.
COPY RIGHT@2020 RION TECHNOLOGY



Electrical Specification

1	Rings	12	2	Current	Signal module: 12 rings
2	Voltage	0-120VDC/VAC			
3	Insulation Resistance	100MΩ@150VDC			
4	Electrical noise	Max.10mΩ;			
5	Dielectric strength	100VAC@50Hz;60S			

Mecchanical Specification

6	Speed	0~250RPM;	7	Torque	Max.0.2 N.M;
8	Life	Typical 10million revolutions, but strongly depends on your working conditions			

Environmental adaptability

9	Working temperature	-40℃~+80℃	10	Storage temperature	-45℃~+85℃
11	humidity	85±3%(30℃+5℃)			
12	Rush	40g,11ms,Half sine wave, Vertical direction 3 times,Level 3times			
13	IP Class	IP51			

Materral/Attachment

14	Contact Material	noble metal	15	Housing material	engineering plastic
16	Lead wire	Rotor:300mm(See wiring diagram) Stator:300mm(See wiring diagram)			

UNLESS OTHERWISE SPECIFIED		TOLERANCES (EXCEPT AS NOTED)		12 rings Signal	
1.ALL DIMENSIONS ARE IN MM HES BREAK SHARP EDGES &DEBURR		DECIMAL X±.1		MODEL	RSP112
2.MATERIAL&FINISH TO BE AS NOTED OR SUBSTITUTED WITH AN APPROVED AND TESTED EQUIVALENT		XX±.03		SIZE	A
FILLETS R.015		XXX±.005		R.E.V.	A / 0
THIRD ANGLE PROJECTION		FRACTIONAL±1/16		SCALE	1:1
ANGULAR±1°		ANGULAR±1°		UNIT	mm

