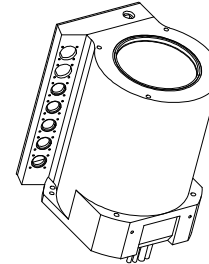
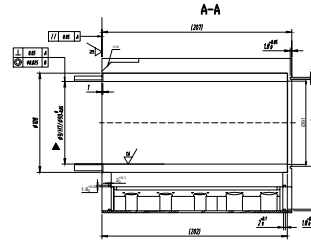
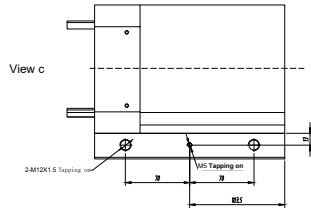
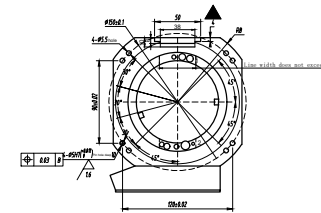
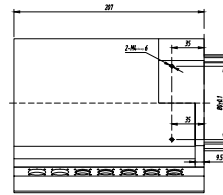
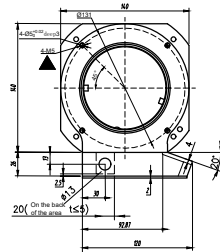


THIS DOCUMENT IS THE PROPERTY OF RION TECHNOLOGY(SHENZHEN) LTD.(HEREAFTER"RION"),IT IS LENT AND IS TO BE RETURNED UPON REQUEST,THE CONTENTS OF THIS DOCUMENT ARE CONFIDENTIAL AND CONSTITUTE TRADE SECRETS PROPRIETARY TO RION,THIS DOCUMENT NOR ITS CONTENTS DOCUMENT NOR ITS CONTENTS SHALL BE DISCLOSED TO ANY UNAUTHORIAED PERSON COPIED OR PUBLISHED WITHOUT RION PRIOR WRITTEN CONSENT.
COPY RIGHT@2023 RION TECHNOLOGY



Marking only playing a serial number and date of production, not dozen LOGO and model

Pack a good concentricity, flatness, holes perpendicular to within 0.05



Electrical Specification

1	Rings	62	2	Current	Power module:2-4 rings power
2	Voltage	0-400VAC/VDC			Power 7A belt shielding+
3	Insulation Resistance	500MΩ@1000VDC			1-20 core shielding signal
4	Electrical noise	Max.10mΩ;			2-4 core shielding signal
5	Dielectric strength	1000VAC@50Hz;60S			Signal module:
					2-8 core shielding encoder
					signal+1-BNC coaxial signals.

Mechanical Specification

6	Speed	0~120RPM;	7	Torque	Max.0.5 N.M;
---	-------	-----------	---	--------	--------------

Environmental adaptability

9	Working temperature	-40℃~+80℃	10	Storage temperature	-40 ~+80
11	humidity	85±3%(30℃+5℃)			
12	Rush	40g,11ms,Half sine wave, Vertical direction 3 times,Level 3times			
13	IP Class	IP51			

Material/Attachment

14	Contact Material	noble metal	15	Housing material	ALL Alloy
16	Lead wire	Rotor: 600mm(See wiring diagram) Stator: 600mm(See wiring diagram)			

UNLESS OTHERWISE SPECIFIED		TOLERANCES (EXCEPT AS NOTED)	
1.ALL DIMENSIONS ARE IN MM HES BREAK SHARP EDGES &DEBURR		DECIMAL X±.1	
2.MATERIAL&FINISH TO BE AS NOTED OR SUBSTITUTED WITH AN APPROVED AND TESTED EQUIVALENT		XX±.03	
FILLETS R.015		FINISH $\sqrt{\text{ }}$	
THIRD ANGLE PROJECTION		FRACTIONAL±1/16	
		ANGULAR±1°	
MODEL	RT090-P1007-S50		
		SIZE	A
DWG.NO	FSD	DATE	2022-11-09
SCALE		1:1	
UNIT	mm		