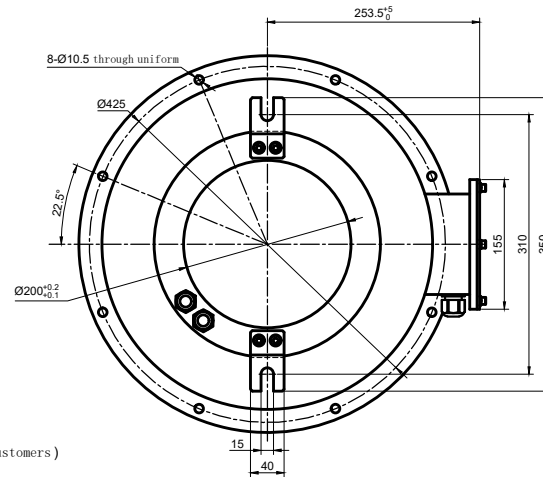
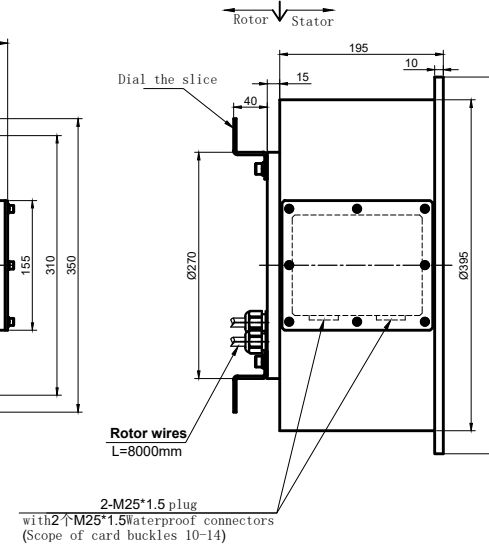


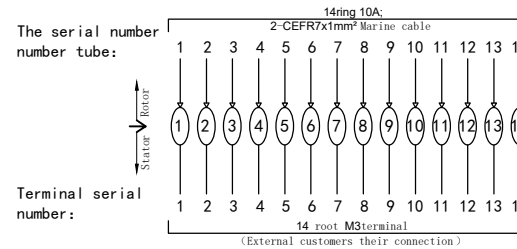
THIS DOCUMENT IS THE PROPERTY OF RION TECHNOLOGY(SHENZHEN) LTD.(HEREAFTER"RION"),IT IS LENT AND IS TO BE RETURNED UPON REQUEST,THE CONTENTS OF THIS DOCUMENT ARE CONFIDENTIAL AND CONSTITUTE TRADE SECRETS PROPRIETARY TO RION,THIS DOCUMENT NOR ITS CONTENTS DOCUMENT NOR ITS CONTENTS SHALL BE DISCLOSED TO ANY UNAUTHORIAED PERSON COPIED OR PUBLISHED WITHOUT RION PRIOR WRITTEN CONSENT.
COPY RIGHT@2023 RION TECHNOLOGY



(stator inside their wiring terminal customers)



Electrical Specification			
1 Rings	14	2 Current	Power module:14 rings ,10A/ring
2 Voltage	0-24VAC/220VDC		
3 Insulation Resistance	500MΩ@500VDC		
4 Electrical noise	Max.10mΩ;		
5 Dielectric strength	500VAC@50Hz;60S		
Mechanical Specification			
6 Speed	0~30RPM;	7 Torque	
Environmental adaptability			
9 Working temperature	-20℃~+80℃	10 Storage temperature	-20 ~+80
11 humidity	85±3%(30℃+5℃)		
12 Rush	40g,11ms,Half sine wave, Vertical direction 3 times,Level 3times		
13 IP Class	IP56		
Material/Attachment			
14 Contact Material	noble metal	15 Housing material	ALL Alloy+Stainless steel 304
16 Lead wire	Rotor: (See wiring diagram) Stator: (See wiring diagram)		



UNLESS OTHERWISE SPECIFIED		TOLERANCES (EXCEPT AS NOTED)		14 rings 10A		
1.ALL DIMENSIONS ARE IN MM HES BREAK SHARP EDGES &DEBURR		DECIMAL X±.1		MODEL	RT200395-P1410-IP56	
2.MATERIAL&FINISH TO BE AS NOTED OR SUBSTITUTED WITH AN APPROVED AND TESTED EQUIVALENT		XX±.03			SIZE	A
FILLETs R.0.15	FINISH	XXX±.005			REV.	A / 0
THIRD ANGLE PROJECTION		FRACTIONAL±1/16		DWG.NO	FSD	DATE
		ANGULAR±1°		2022-11-09	UNIT	mm