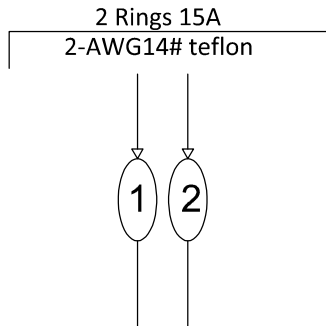
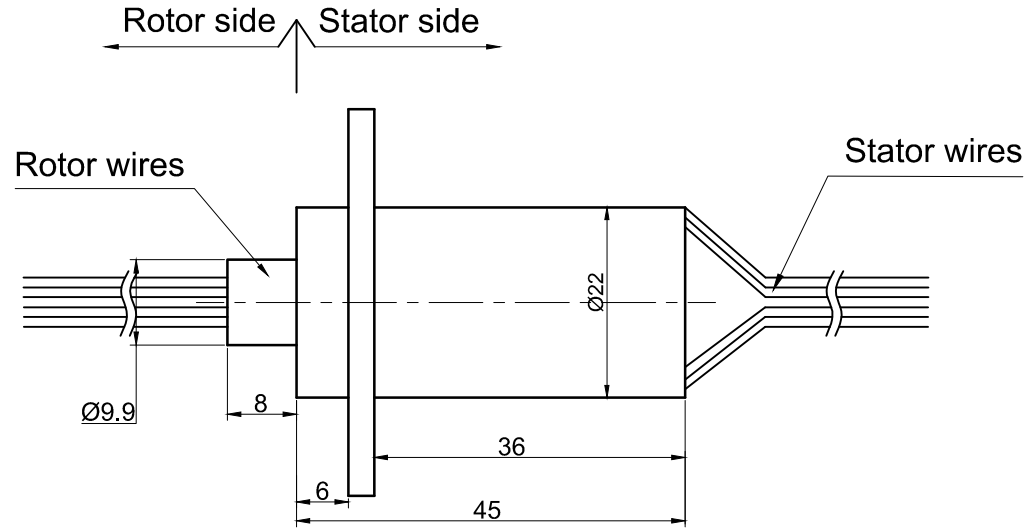
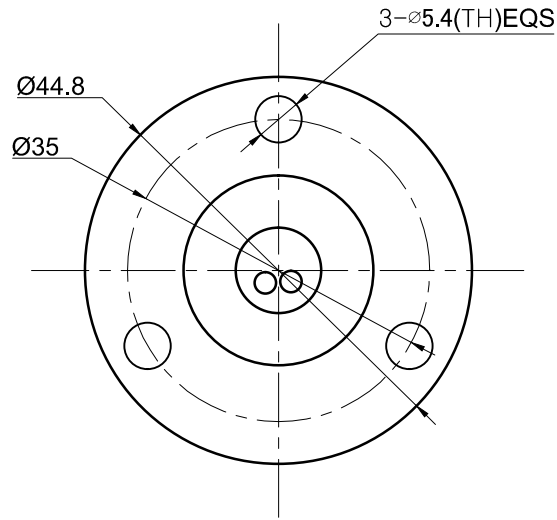


THIS DOCUMENT IS THE PROPERTY OF RION TECHNOLOGY(SHENZHEN) LTD.(HEREAFTER"RION"),IT IS LENT AND IS TO BE RETURNED UPON REQUEST,THE CONTENTS OF THIS DOCUMENT ARE CONFIDENTIAL AND CONSTITUTE TRADE SECRETS PROPRIETARY TO RION,THIS DOCUMENT NOR ITS CONTENTS DOCUMENT NOR ITS CONTENTS SHALL BE DISCLOSED TO ANY UNAUTHORIAED PERSON COPIED OR PUBLISHED WITHOUT RION PRIOR WRITTEN CONSENT.  
COPY RIGHT@2020 RION TECHNOLOGY



### Electrical Specification

1 Rings	2	2	Current	Power module: 2rings ,15A/ring
3 Voltage	0-380VDC/VAC			
4 Insulation Resistance	500MΩ@500VDC			
5 Electrical noise	Max.10mΩ;			
6 Dielectric strength	500VAC@50Hz;60S			

### Mecchanical Specification

7 Speed	0~250RPM;	8 Torque	Max.0.2 N.M;
9 Life	Typical:10million revolutions, but strongly depends on your working conditions		

### Environmental adaptability

10 Working temperature	-30℃~+80℃	11 Storage temperature	-35℃~+85℃
12 humidity	85±3%(30℃+5℃)		
13 Rush	40g,11ms,Half sine wave, Vertical direction 3 times,Level 3times		
14 IP Class	IP51		

### Materral/Attachment

15 Contact Material	Precious metal	16 Housing material	Engineering plastic
17 Lead wire	Rotor:300mm(See wiring diagram) Stator:300mm(See wiring diagram)		

UNLESS OTHERWISE SPECIFIED		TOLERANCES (EXCEPT AS NOTED)		2 rings 15A	
1.ALL DIMENSIONS ARE IN MM HES BREAK SHARP EDGES &DEBURR		DECIMAL X±.1		MODEL	RW1215
2.MATERIAL &FINISH TO BE AS NOTED OR SUBSTITUTED WITH AN APPROVED AND TESTED EQUIVALENT		XX±.03		SIZE	A
FILLETS R.015		XXX±.005		R.E.V.	A / 0
THIRD ANGLE PROJECTION		FRACTIONAL±1/16		SCALE	1:1
ANGULAR±1°		ANGULAR±1°		UNIT	mm

