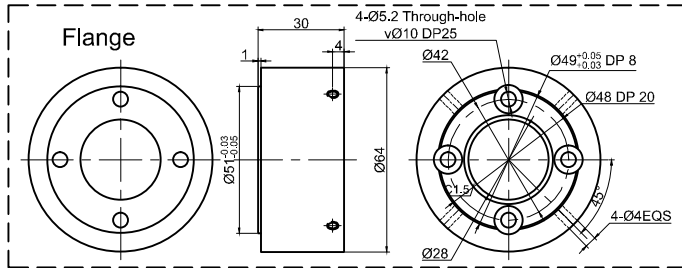
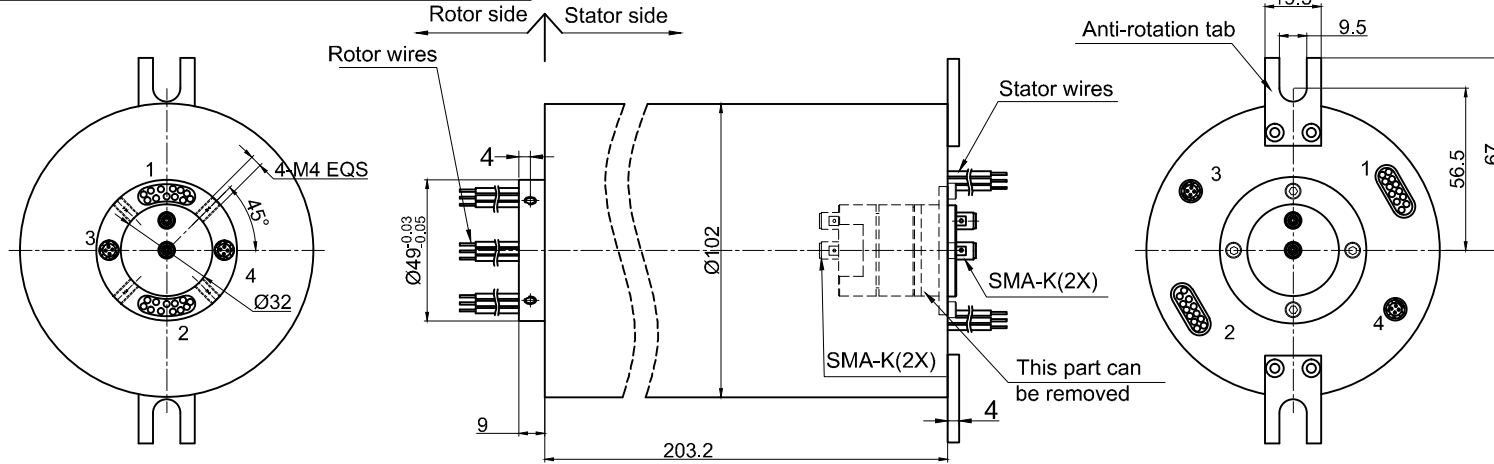
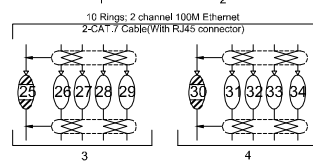
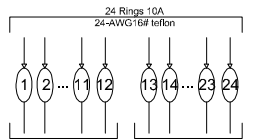


THIS DOCUMENT IS THE PROPERTY OF RION TECHNOLOGY(SHENZHEN) LTD.(HEREAFTER"RION"),IT IS LENT AND IS TO BE RETURNED UPON REQUEST,THE CONTENTS OF THIS DOCUMENT ARE CONFIDENTIAL AND CONSTITUTE TRADE SECRETS PROPRIETARY TO RION,THIS DOCUMENT NOR ITS CONTENTS DOCUMENT NOR ITS CONTENTS SHALL BE DISCLOSED TO ANY UNAUTHORIAED PERSON COPIED OR PUBLISHED WITHOUT RION PRIOR WRITTEN CONSENT.
COPY RIGHT@2020 RION TECHNOLOGY



ELECTRICAL SPECIFICATIONS		
MHF200-SMA 4.5G	Channel1	Channel2
FREQUENCY(GHZ):	DC to 4.5	DC to 4.5
peak power(watts):	10 watts max	10 watts max
Average power at 1 GHz:	10mW	10mW
VSWR(dB)(MAX):	1.35	1.35
VSWR-WOW(dB)(MAX):	0.05	0.1
INSERTION LOSS(dB)(MAX):	0.3	0.3
INSERTION LOSS WOW(dB)(MAX):	0.05	0.1
Channel isolation(dB)(MIN):	50	50
Phase-WOW(dB)(MAX):	1	2
CONNECTION:	SMA	SMA
POTATION SPEED:	6 revolutions	
Torque:	Max 6 N.CM	
HOUSE MATERIAL:	ALUMINUM ALLOY	
FINISH:	IRRIDITE	
LIFE(MIN):	10,000 REVOLUTIONS PER DAY	



UNLESS OTHERWISE SPECIFIED		TOLERANCES EXCEPT AS NOTED:	
1.ALL DIMENSIONS ARE IN MM HES BREAK SHARP EDGES & DEBURR			
2.MATERIAL & FINISH TO BE AS NOTED OR SUBSTITUTED WITH AN APPROVED AND TESTED EQUIVALENT			
FILLET R.015	FINISH	DECIMAL X±.1 XX±.03 XXX±.005	SIZE A
THIRD ANGLE PROJECTION		FRACTIONAL 1/16	R E V. A / 0
		ANGULAR ±1°	SCALE 1:1
			UNIT mm



Electrical Specification			
1 Rings	34	2 Current	Power module: 24rings, 10A/ring Signal module: 2 channel 100M Ethernet
3 Voltage	0-300VDC/VAC		
4 Insulation Resistance	500MΩ@1000VDC		
5 Electrical noise	Max.10mΩ;		
6 Dielectric strength	800VAC@50Hz;60S		

Mechanical Specification			
7 Speed	0~250RPM;	8 Torque	Max.3 N.M;
9 Typical Life	50million revolutions, but strongly depends on your working conditions		

Environmental adaptability			
10 Working temperature	-40℃~+80℃	11 Storage temperature	-45℃~+85℃
12 humidity	85±3%(30℃+5℃)		
13 Rush	40g,11ms,Half sine wave, Vertical direction 3 times,Level 3times		
14 IP Class	IP66		

Material/Attachment			
15 Contact Material	Precious metal	16 Housing material	ALL Alloy
17 Lead wire	Rotor:1200mm(See wiring diagram) Stator:500mm(See wiring diagram)		