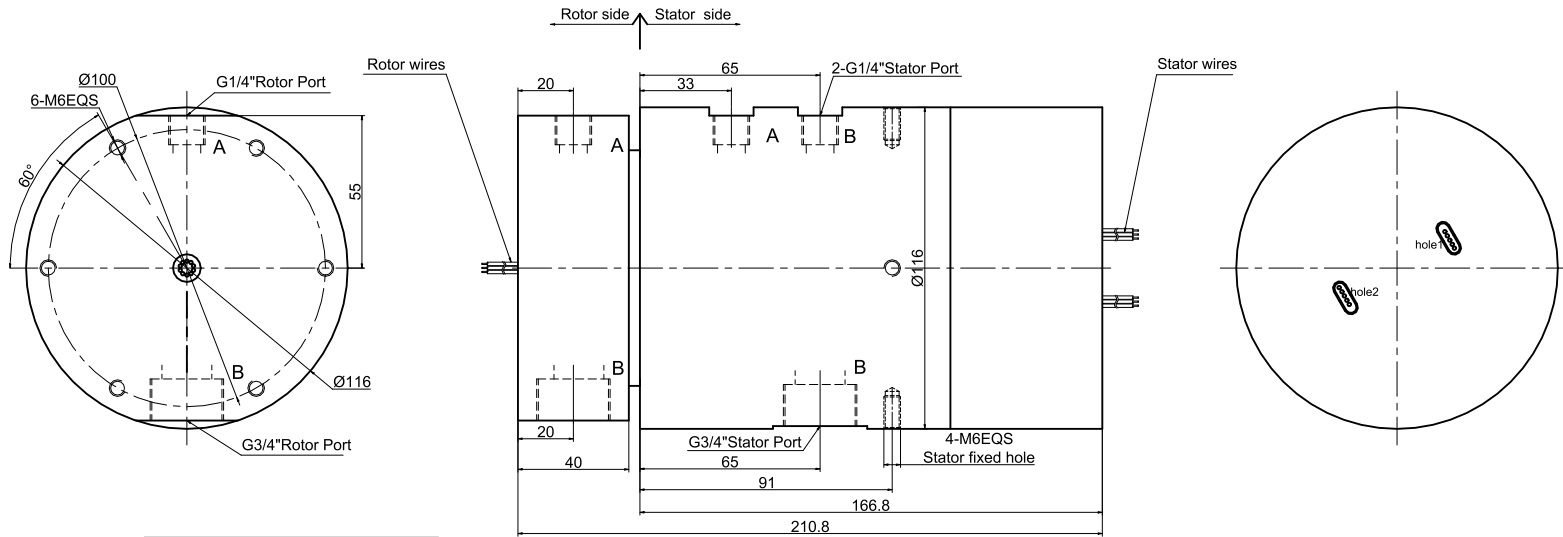
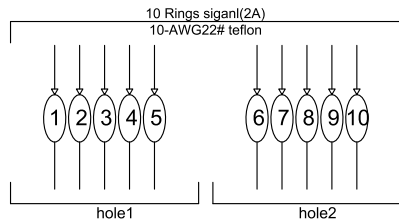


THIS DOCUMENT IS THE PROPERTY OF RION TECHNOLOGY(SHENZHEN) LTD.(HEREAFTER"RION"),IT IS LENT AND IS TO BE RETURNED UPON REQUEST,THE CONTENTS OF THIS DOCUMENT ARE CONFIDENTIAL AND CONSTITUTE TRADE SECRETS PROPRIETARY TO RION,THIS DOCUMENT NOR ITS CONTENTS DOCUMENT NOR ITS CONTENTS SHALL BE DISCLOSED TO ANY UNAUTHORIAED PERSON COPIED OR PUBLISHED WITHOUT RION PRIOR WRITTEN CONSENT.  
COPY RIGHT@2020 RION TECHNOLOGY



A channel for the oil channel  
B channel for the gas channel



### Technical parameters of rotary joint

1 Pressure	Max 1 Mpa	2 Passage	2 passage Gas
3 Texture of material	carbon	4 Tracheal connector	G1/4"+G3/4"
5 Media type	Compressed air/oil		

### Electrical Specification

1 Rings	10	2 Current	Signal module:10 rings, 2A/ring
3 Voltage	0-300VDC/VAC		
4 Insulation Resistance	500MΩ@500VDC		
5 Electrical noise	Max.10mΩ;		
6 Dielectric strength	500VAC@50Hz;60S		

### Mechanical Specification

7 Speed	0~200RPM;	8 Torque	Max.2N.M;
9 Typical Life	10million revolutions, but strongly depends on your working conditions		

### Environmental adaptability

10 Working temperature	-30℃~+80℃	11 Storage temperature	-35℃~+85℃
12 humidity	85±3%(30℃+5℃)		
13 Rush	40g,11ms,Half sine wave, Vertical direction 3 times,Level 3times		
14 IP Class	IP51		

### Material/Attachment

15 Contact Material	noble metal	16 Housing material	ALL Alloy
17 Lead wire	Rotor:300mm(See wiring diagram) Stator:300mm(See wiring diagram)		

UNLESS OTHERWISE SPECIFIED  
1.ALL DIMENSIONS ARE IN MM HES BREAK SHARP EDGES &DEBURR  
2.MATERIAL&FINISH TO BE AS NOTED OR SUBSTITUTED WITH AN APPROVED AND TESTED EQUIVALENT

TOLERANCES (EXCEPT AS NOTED)  
DECIMAL Xs.1 XXs.03 XXXs.005

FILLETES R.015 FINISH

THIRD ANGLE PROJECTION

1 channel hydraulic oil +1 channel one in two out of gas +10 rings signal  
MODEL RX01229003

**RION**

SIZE	A
RE.V.	A/0
SCALE	1:1
UNIT	mm