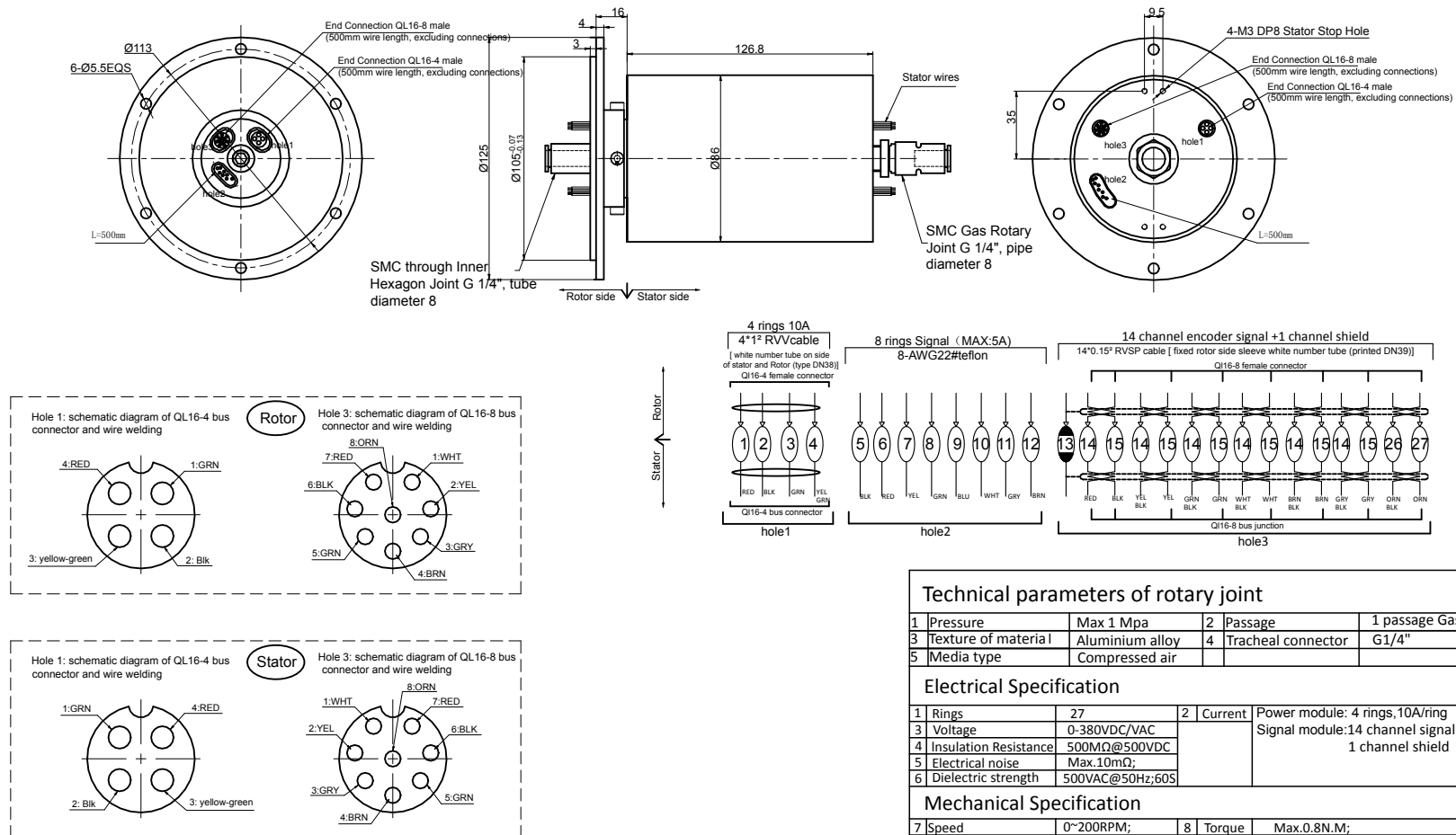


THIS DOCUMENT IS THE PROPERTY OF RION TECHNOLOGY(SHENZHEN) LTD.(HEREAFTER"RION"),IT IS LENT AND IS TO BE RETURNED UPON REQUEST,THE CONTENTS OF THIS DOCUMENT ARE CONFIDENTIAL AND CONSTITUTE TRADE SECRETS PROPRIETARY TO RION,THIS DOCUMENT NOR ITS CONTENTS DOCUMENT NOR ITS CONTENTS SHALL BE DISCLOSED TO ANY UNAUTHORIED PERSON COPIED OR PUBLISHED WITHOUT RION PRIOR WRITTEN CONSENT.
COPY RIGHT@2021 RION TECHNOLOGY



Technical parameters of rotary joint				
1	Pressure	Max 1 Mpa	2	Passage
3	Texture of material	Aluminium alloy	4	Tracheal connector
5	Media type	Compressed air		
1 passage Gas G1/4"				
Electrical Specification				
1	Rings	27	2	Current
3	Voltage	0-380VDC/VAC		Power module: 4 rings, 10A/ring Signal module: 14 channel signal + 1 channel shield
4	Insulation Resistance	500MΩ@500VDC		
5	Electrical noise	Max. 10mΩ;		
6	Dielectric strength	500VAC@50Hz; 60S		
Mechanical Specification				
7	Speed	0~200RPM;	8	Torque
9	Typical	Life	Max. 0.8N.M; 20million revolutions, but strongly depends on your working conditions	
Environmental adaptability				
10	Working temperature	-30℃~+80℃	11	Storage temperature
12	humidity	85±3%(30℃+5℃)	-35℃~+85℃	
13	Rush	40g, 11ms, Half sine wave, Vertical direction 3 times, Level 3times		
14	IP Class	IP51		
Material/Attachment				
15	Contact Material	noble metal	16	Housing material
17	Lead wire	Rotor: (See wiring diagram) Stator: (See wiring diagram)	ALL Alloy	