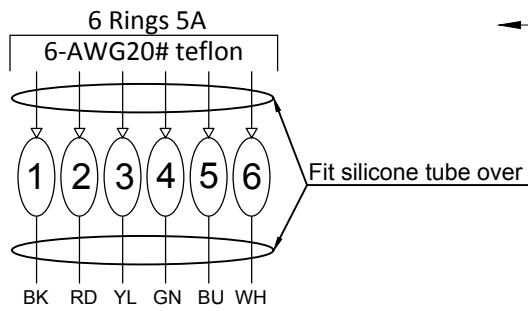
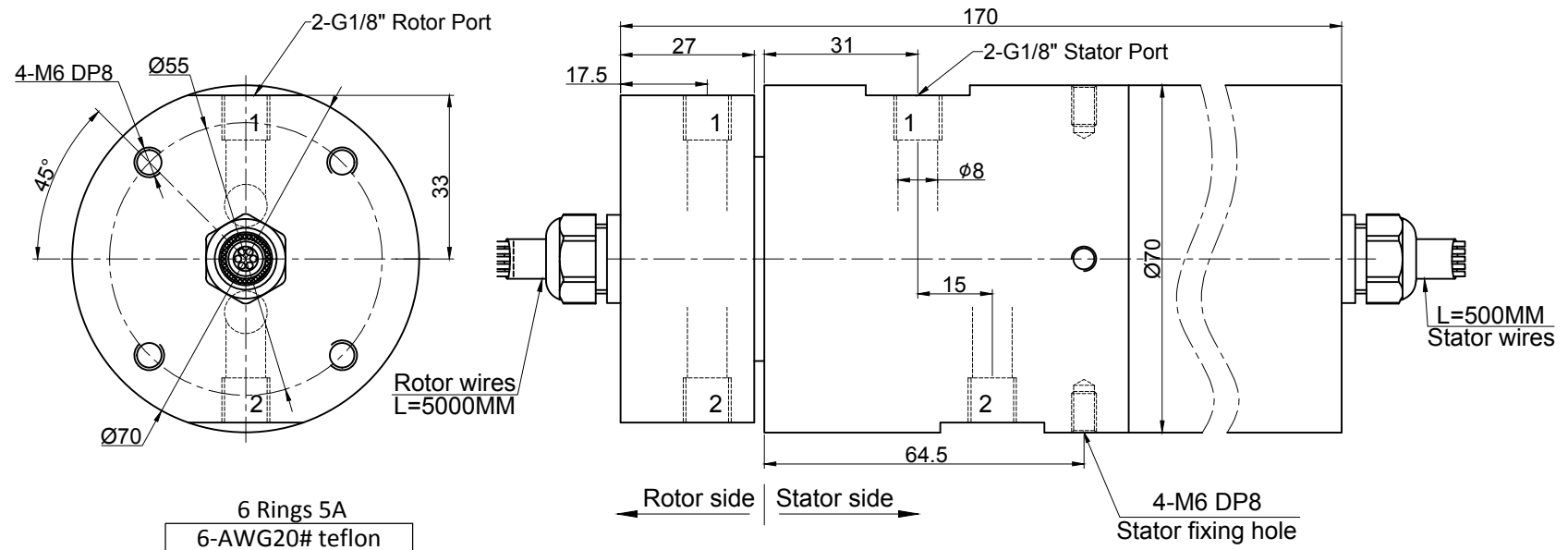


MARK	ECN NO.	Modify	Approve	DATE

THIS DOCUMENT IS THE PROPERTY OF RION TECHNOLOGY(SHENZHEN) LTD.(HEREAFTER"RION"),IT IS LENT AND IS TO BE RETURNED UPON REQUEST,THE CONTENTS OF THIS DOCUMENT ARE CONFIDENTIAL AND CONSTITUTE TRADE SECRETS PROPRIETARY TO RION,THIS DOCUMENT NOR ITS CONTENTS DOCUMENT NOR ITS CONTENTS SHALL BE DISCLOSED TO ANY UNAUTHORIAED PERSON COPIED OR PUBLISHED WITHOUT RION PRIOR WRITTEN CONSENT.
COPY RIGHT@2026 RION TECHNOLOGY



Technical parameters of rotary joint			
1 Pressure	0~0.6 MPa	2 Passage	2 Passage
3 Torque	Max. 4 N·m	4 Tracheal connector	G1/8"
5 Media type	Compressed Air	6 Working temperature	-30℃~+80℃
7 Speed	0~20 rpm	8 Storage temperature	-35℃~+85℃
9 Texture of materia	45#(Special Surface Treatment)		
UNLESS OTHERWISE SPECIFIED		TOLERANCES (EXCEPT AS NOTED)	
1.ALL DIMENSIONS ARE IN MM HES BREAK SHARP EDGES & DEBURR.			
2.MATERIAL&FINISH TO BE AS NOTED OR SUBSTITUTED WITH AN APPROVED AND TESTED EQUIVALENT.			
FILLETS R.015		FINISH	✓
THIRD ANGLE PROJECTION			
SIZE RANGE		TOLERANCE	
X < 6		±0.1	
6 ≤ X < 30		±0.2	
30 ≤ X < 120		±0.3	
120 ≤ X < 400		±0.5	
400 ≤ X < 1000		±0.8	
1000 ≤ X		±1.2	
FRACTIONAL ±1/16		ANGULAR R±1° (8.6)	
6 Rings 5A			
MODEL RX26062306			
RION		SIZE	A
RION		REV.	A/0
RION		SCALE	1:1
RION		UNIT	mm

Electrical Specifications			
1 Rings	6	2 Current	Signal module: 6 Rings 5A
3 Voltage	0~600VAC / VDC		
4 Insulation Resistance	≥500MΩ@800VDC		
5 Electrical noise	MAX 10 mΩ		
6 Dielectric strength	800VAC@50Hz;60s		
Mechanical Specification			
7 Speed	0~20 rpm	8 Torque	MAX 4 N·m
Environmental adaptability			
9 Working temperature	-30℃~+80℃	10 Storage temperature	-35℃~+80℃
11 Humidity	85±3%RH(30℃+5℃)		
12 Shock	40g,11ms,Half sine wave, Vertical 3 times,Horizontal 3 times		
13 Protection Rating	Dust Explosion-Proof (ATEX II)		
Material/Attachment			
14 Contact Material	Noble metal	15 Housing material	45#(Special Surface Treatment)
16 Lead wire	Rotor:(See wiring diagram) Stator:(See wiring diagram)		